

LUXE ET AL

£4.80

THE WINNERS ISSUE

PART ONE



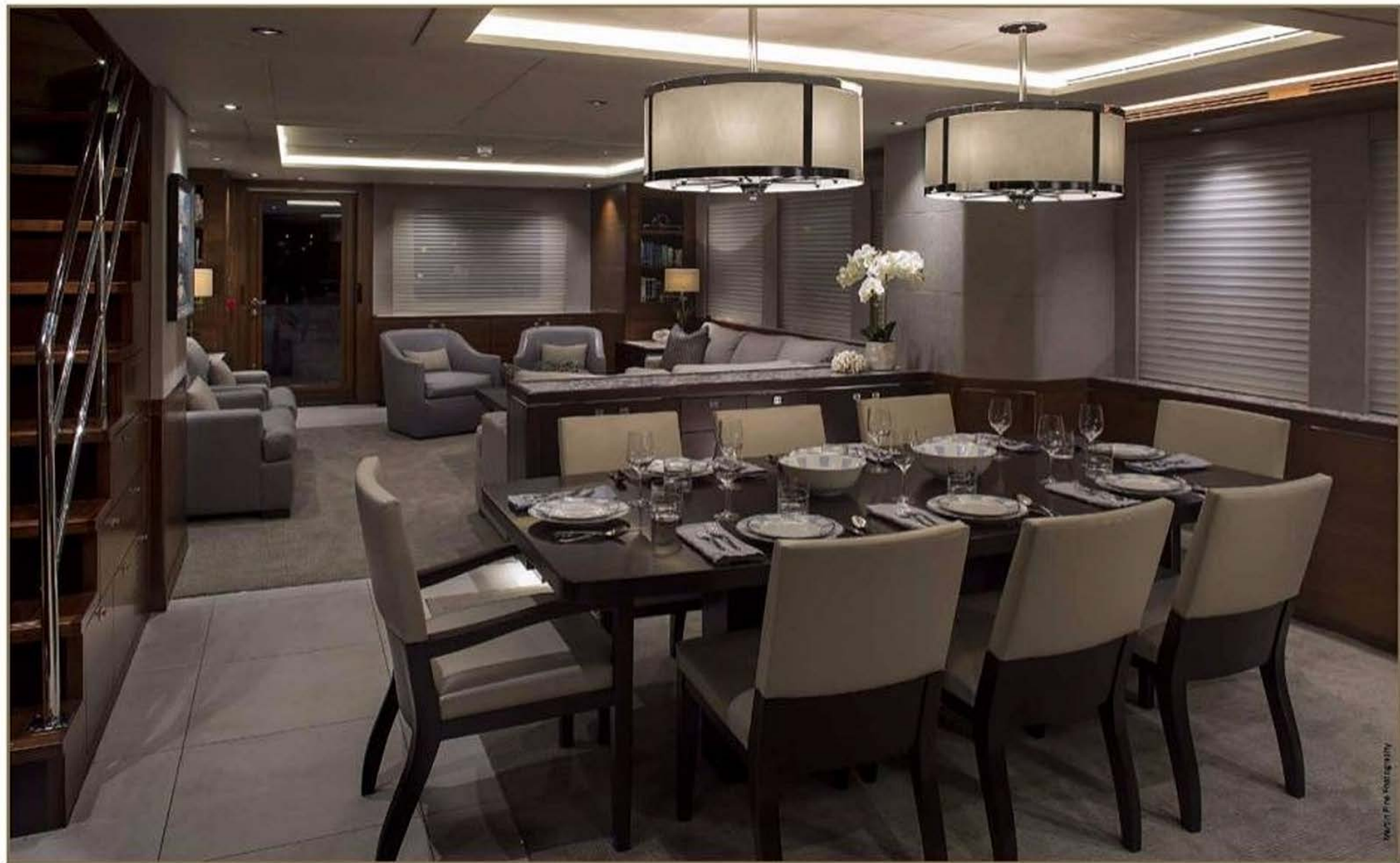
WINNER / POWER YACHT 25-40 METRES

30M OF MEGAYACHT LUXURY, STYLING AND WORLD TRAVELLING CAPABILITY

Nordhavn
96 Lacey Kay



Martin Fine Photography



“LUXURY AND THE CAPABILITY TO TRAVEL THE WORLD, ALL WITHIN A MANAGEABLE 30 METRES.”

This year's International Yacht & Aviation Awards saw Nordhavn's Lacey Kay as the worthy winner of the Power Yacht 25-70M category.

Lacey Kay is the second hull in the Nordhavn 96 series of explorer yachts. The Nordhavn 96 bridges the gap between the 86 and Nordhavn's 120-foot megayacht. The 86, 98ft Nordhavn 96 expedition motor yacht was built by Nordhavn in China at the Xiaraon shipyard and she was delivered to her owner in 2016.

A huge selling point for Lacey Kay is the fact it maintains megayacht styling, luxury and the capability to travel the world, all within a manageable 30 metres. Scott Cole, of Ardeo Design, was responsible for the interior design of the project.

The owners of the yacht previously had a Nordhavn 76, which had exceptional global cruising capabilities. The client wanted a boat that could host more friends and family, with added interior and exterior entertaining areas, an additional VIP stateroom for guests and an enhanced Master Suite. Jeff Fishman and his team created a world class cruising vessel of exceptional quality and capability, with a luxurious interior that mimics those of mega yachts for the highest level of comfort imaginable, no matter how remote their itinerary and a boat that is still able to be managed with minimal to no crew.

She is based on the hull of the very successful Nordhavn 86 and incorporates a 10-foot cockpit extension that allows for space in several areas of the boat including below decks in the crew area and lazarette; at main deck level in the cockpit and saloon; on the pilothouse deck the upper master stateroom; and an even more capacious flybridge.

The fuel capacity remains the same, although slight gains in fuel burn are likely due to the 96's longer water line. The displacement is also virtually the same.

This new model was achieved by the relatively easy procedure of extending the mould of the Nordhavn 86. PAE use this method as it is an efficient way to give a customer the additional space they are seeking, without the drastic cost of building an entirely new hull. Nordhavn has employed this method of thinking with several of its other models including the N57 (based on the N47 hull), the N60 and 63 (based on the N56 hull), the N68 (based on the N64 hull) and the N76 (based on the N72 hull), and the approach has been a hugely successful one.

The Nordhavn 96 makes it possible to have access to the luxuries of a 100-foot boat for a small boat investment. The salon and galley measures 63 feet in length and the combination of wheelhouse, captain's cabin and sky lounge measure almost 34 feet in length. She includes a vast, full-width owner's suite in addition to the captain's cabin, three guest staterooms with ensuite heads, plus the spacious crew wing which comprises a sunny cabin and hood all with exterior entrances. A laundry and utility room are also provided. The luxurious and functional interior was created by Scott Cole and is finished with line hardwoods, walnut wood paneling, beautiful mouldings and raised panels combined with stone floors, granite countertops, the finest hardware, lighting and fixtures. The flybridge on Lacey Kay features a sunbather's spa pool and cocktail bar, while the foredeck is dedicated to tender storage, with enough room to house a Caribe FIB and a centre console tender.

Nordhavn's favourite aspect of the project was achieving the owner's desires for an upper-level master suite spanning the full deck's width, including a private, walk-out aft deck/balcony and a full-width VIP guest cabin forward. The heavy full displacement hull has a sea kindly motion and stability to maintain comfort in even the roughest conditions that the yacht will routinely encounter. The added range will allow extended cruising time in the most remote areas of the world with concern for fuel. The yacht's hull design, combined with the lush interior, means enjoying on board for any length of time under any conditions is a pure pleasure.

In this project, as in all of their projects, PAE recognised how much design and thought goes into the creation of a semi-custom/custom yacht. There are no many aspects to consider from the capability and safety of the boat, to moulding the owner's specific criteria and making sure engineering and aesthetics harmonise with each other. In Lacey Kay they have clearly met their objectives.

This is the second year that Nordhavn have attended the awards in Venice and their appreciation of their unexpected win against such notable competition was expressed on their return to the US. When asked about the importance of the awards Jeff Fishman, the VP of PAE/Nordhavn said "The industry recognition for excellent design is very important and this award will serve to help the buying public with their decision process". As for future plans, Nordhavn will continue to build additional 96 models with varying interior and decor which are quite different from the Lacey Kay.